



Environment and Heritage

Summer Survey Results

Photo credit: Jamie Turnbull

Nature and Mental health



Nature improves your health

Daily contact with nature is linked to reduced levels of chronic stress, reductions in obesity and improved concentration, so get your colleagues outside and help them feel healthier.



Nature makes happier workers

Green your office by creating an outside area and encouraging lunchtime walks. There is a 10% reduction in work absence if employees are able to look at a green space rather than a wall.



Green offices boost productivity

Adding plants and photos of wildlife (or even playing birdsong!) can help your colleagues at work. Employees are 15% more productive when workplaces have even a few houseplants.



Nature makes you more active

Map out local walking routes in wild places for people to enjoy at lunchtime. People with easy access to nature are three times as likely to be active as those without access.



Green exercise can save the NHS money

Ecotherapy could reduce antidepressant prescription costs, so encourage walking meetings and exercise in your workplace. Mind has shown that green exercise benefits health and wellbeing.

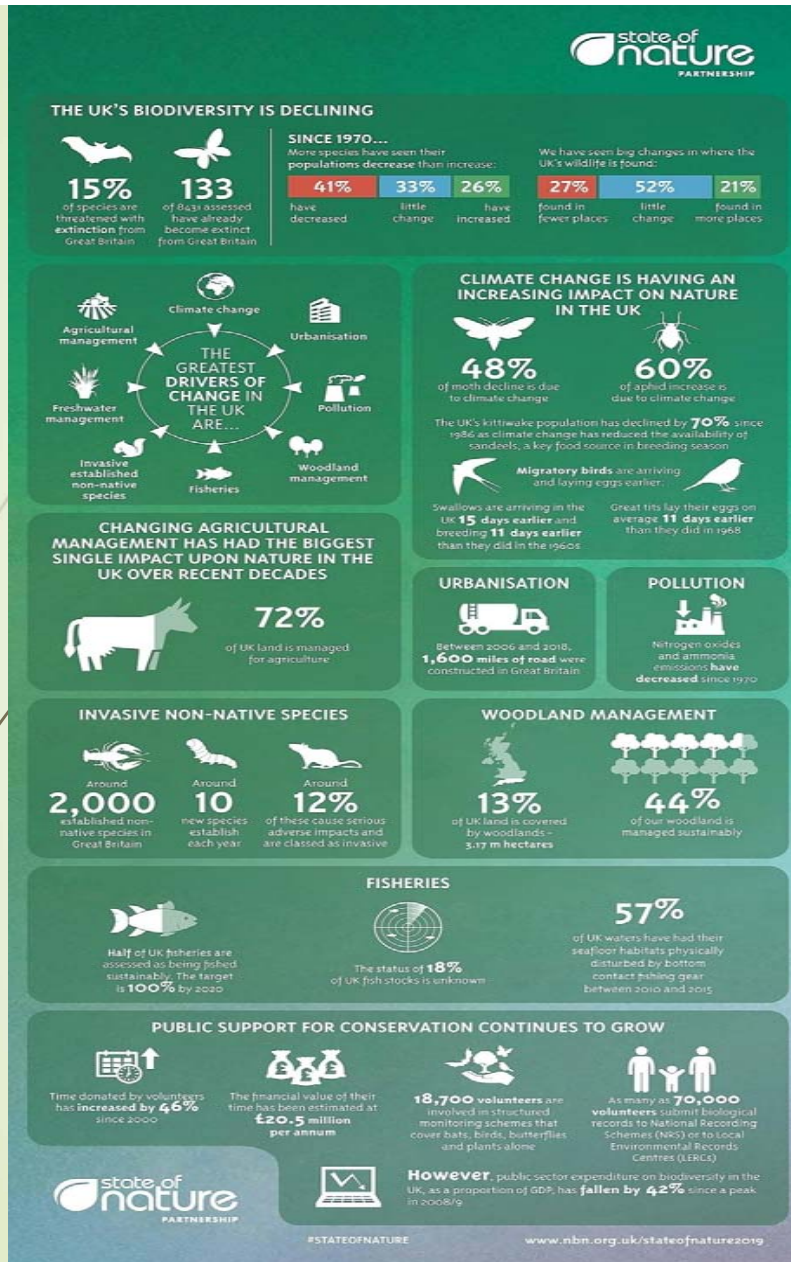


Green neighbourhoods cut depression

Natural features near houses reduce mental illness. Work with neighbours to create wildflower borders and bird feeding stations.

“There is now compelling evidence to show that contact with nature and the outdoors improves physical health and mental wellbeing.

A review of nature-based interventions for mental health care (NECR204 – 09/02/2016)



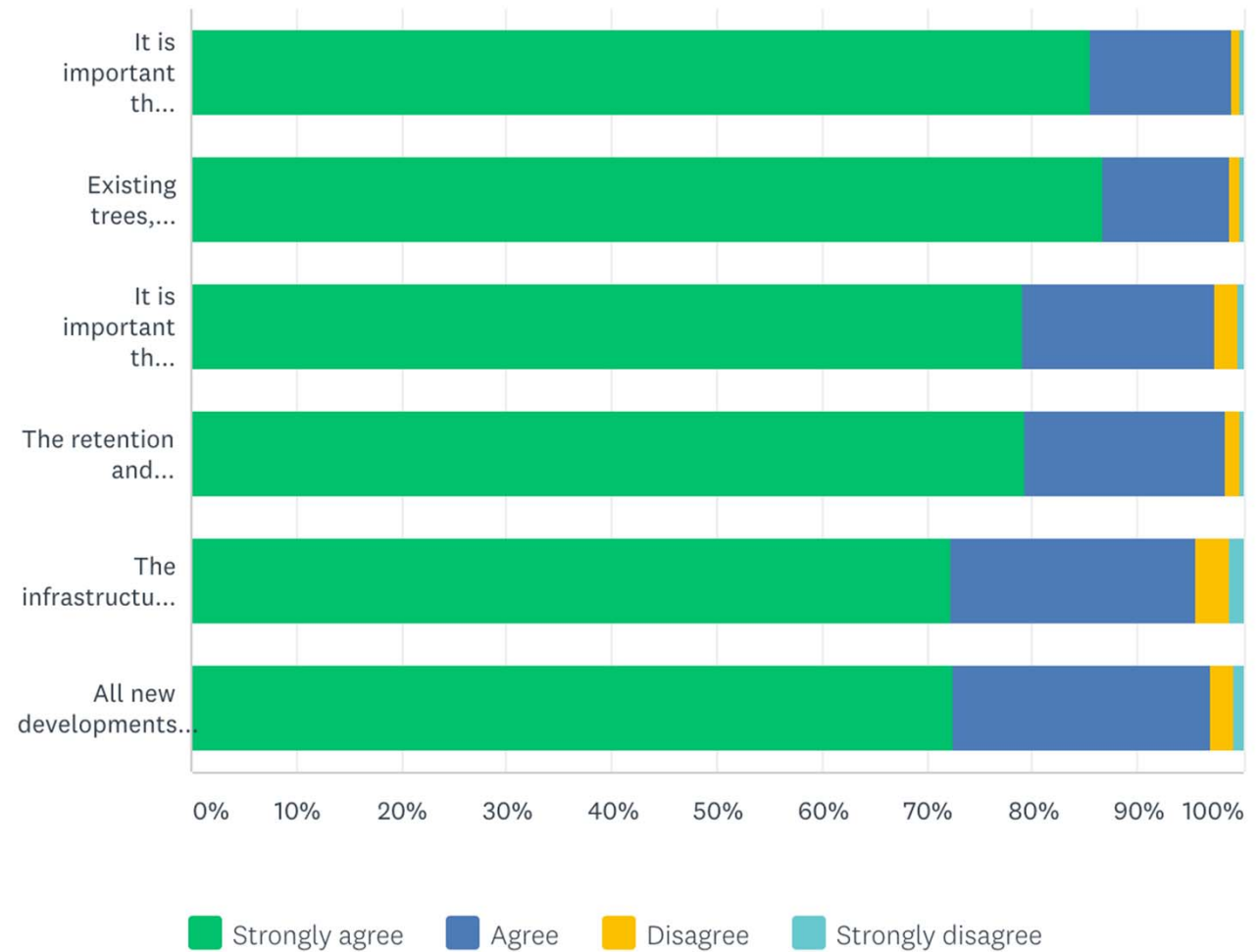
The "Great Thinning"

60% of "priority species" having declined since 1970, and a 13% decline in the average abundance of species studied.

The stark warning comes from the latest [State of Nature report](#), released on October 4th 2019 by a group of more than 70 conservation charities, research institutions and government bodies.

How do you feel about the following statements?

Answered: 856 Skipped: 32



Q14 Green Infrastructure

| | STRONGLY AGREE | AGREE | DISAGREE | STRONGLY DISAGREE | TOTAL | WEIGHTED AVERAGE |
|--|----------------|---------------|------------|-------------------|-------|------------------|
| It is important that we identify, protect and enhance buffer areas that we wish to retain as our green spaces for the use of wildlife and the Community. | 85.63% 727 | 13.31% 113 | 0.82% 7 | 0.24% 2 | 849 | 1.16 |



These policies will identify the core statutory and non-statutory nature conservation designations within the parish and seek to include the areas of natural and semi natural habitat surrounding and connecting them (buffer areas) in order to protect our existing green infrastructure from development.

The St Mewan adopted plan, among others, has created a policy similar to one that we could use provided that we demonstrate the importance of these wildlife corridors and surrounding habitats, identify them as local green spaces, and use the information you as a community have given us to evidence our aims.

| | STRONGLY AGREE | AGREE | DISAGREE | STRONGLY DISAGREE | TOTAL | WEIGHTED AVERAGE |
|--|----------------|---------------|------------|-------------------|-------|------------------|
| Existing trees, woodland, hedgerows and Cornish hedges should be retained, conserved and enhanced in order to maintain and create effective wildlife habitats and corridors. | 86.74% 739 | 12.09% 103 | 0.94% 8 | 0.23% 2 | 852 | 1.15 |



Green Infrastructure retains open spaces, links and access to open space

Hedgerows are protected under separate policy, but Cornish Hedges do not always qualify.

Cheryl Marriott, head of conservation at Cornwall Wildlife Trust said many miles of Cornish hedges had already vanished. "They are a vital element of our landscape," she said. "They are being lost primarily to developments such as big housing or industrial estates."

Source: The Guardian 05/05/2019 – Cornish hedges under threat from developers say Conservationists

| | STRONGLY AGREE | AGREE | DISAGREE | STRONGLY DISAGREE | TOTAL | WEIGHTED AVERAGE |
|---|----------------|---------------|-------------|-------------------|-------|------------------|
| It is important that our villages and hamlets retain their unique and distinctive characteristics as separate and individual settlements. | 79.20% 670 | 18.20% 154 | 2.25% 19 | 0.35% 3 | 846 | 1.24 |



| | STRONGLY AGREE | AGREE | DISAGREE | STRONGLY DISAGREE | TOTAL | WEIGHTED AVERAGE |
|---|----------------|---------------|-------------|-------------------|-------|------------------|
| The retention and preservation of important panoramic landscape views and vistas is key to maintaining and enhancing landscape integrity. | 79.36% 669 | 19.10% 161 | 1.42% 12 | 0.12% 1 | 843 | 1.22 |



| | STRONGLY AGREE | AGREE | DISAGREE | STRONGLY DISAGREE | TOTAL | WEIGHTED AVERAGE |
|--|----------------|---------------|-------------|-------------------|-------|------------------|
| The infrastructure for delivering 5G, with the benefit of around 10 times current mobile data speeds, should not result in the removal of, or damage to, existing trees, hedgerows, wildlife areas and wildlife corridors. | 72.33% 609 | 23.28% 196 | 3.21% 27 | 1.19% 10 | 842 | 1.33 |

the diagram show how increasing the tree height above the line of sight from the base station and further into what is known as the “Fresnel zone” of the propagation channel will cause substantial diffraction or shadowing loss. To avoid this shadowing loss and be outside of the Fresnel zone, it is necessary for the tree height to be at least 3m less than the base station height.

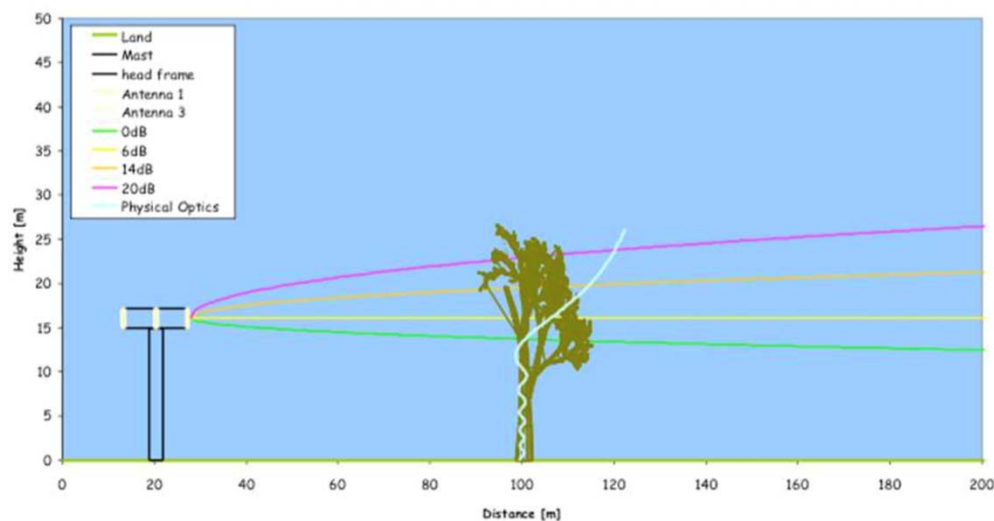


Figure 3 – Screening the visual impact of masts with trees also screens the RF signal. Source Telefonica UK



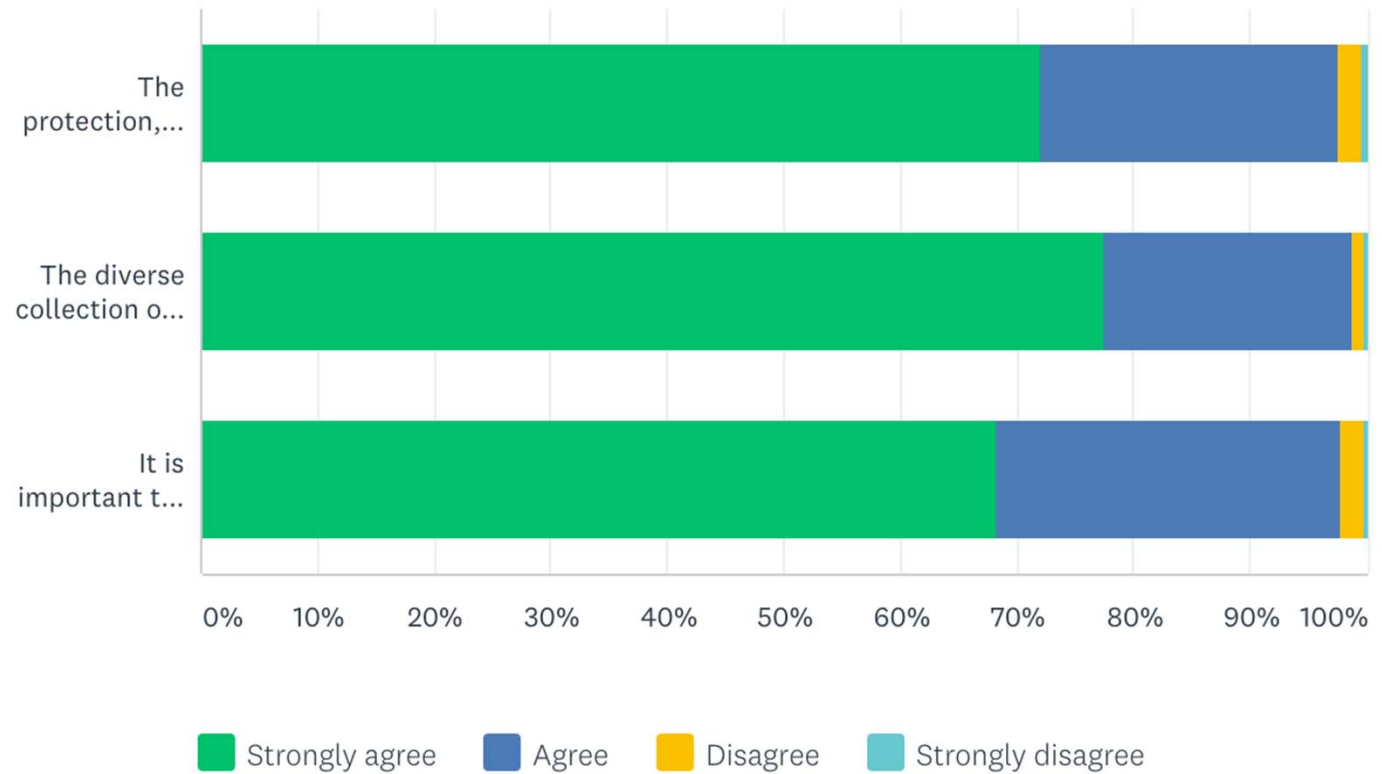
| | STRONGLY AGREE | AGREE | DISAGREE | STRONGLY DISAGREE | TOTAL | WEIGHTED AVERAGE |
|--|----------------|---------------|-------------|-------------------|-------|------------------|
| All new developments should include integral bio-diversity enhancement measures such as bird boxes/bee bricks and open sustainable drainage systems to attract and protect wildlife as a planning condition. | 72.53% 610 | 24.49% 206 | 2.26% 19 | 0.71% 6 | 841 | 1.31 |



Heritage:How do you feel about the following statements?

Answered: 853 Skipped: 35

Heritage:How do you feel about the following statements?



| | STRONGLY AGREE | AGREE | DISAGREE | STRONGLY DISAGREE | TOTAL |
|--|----------------|---------------|-------------|-------------------|-------|
| The protection, maintenance and enhancement of historic sites such as prehistoric remains, ancient field boundaries, historic buildings, engine houses, and ancient byways is essential. | 72.15% 614 | 25.38% 216 | 2.12% 18 | 0.35% 3 | 851 |

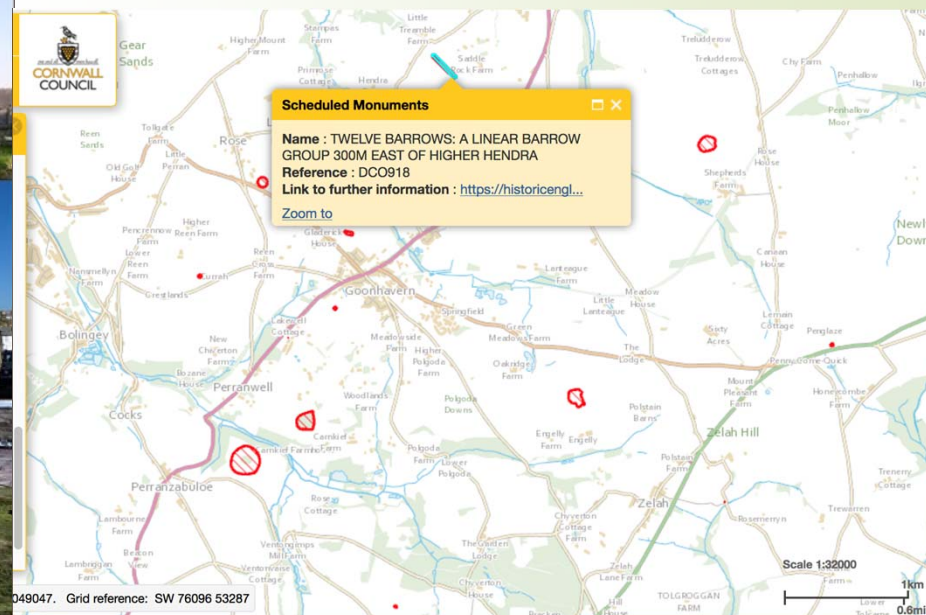


We must identify non designated historic assets of importance to the Parish. We can have polices that protect and enhance local assets, and aim to improve them, e.g. better access and conservation aims (subject to necessary funding).

| | STRONGLY AGREE | AGREE | DISAGREE | STRONGLY DISAGREE | TOTAL |
|---|----------------|---------------|------------|-------------------|-------|
| The diverse collection of heritage assets which make up the fabric of the Parish landscape requires protection against inappropriate development and destruction. | 77.59% 658 | 21.23% 180 | 0.94% 8 | 0.24% 2 | 848 |

Guide development to areas that avoid harm to historic assets and landscapes.

Include design policies to protect and enhance the historic character.



| | STRONGLY AGREE | AGREE | DISAGREE | STRONGLY DISAGREE | TOTAL |
|--|-------------------|-------|----------|----------------------|-------|
|--|-------------------|-------|----------|----------------------|-------|

It is important that local archaeological research and robust protection of heritage assets is used to preserve our Cornish heritage and inform educational provision.

| | | | | |
|--------|--------|-------|-------|-----|
| 68.36% | 29.52% | 1.89% | 0.24% | |
| 579 | 250 | 16 | 2 | 847 |






Cornish Folklore

Lien gwerinek a Gernow



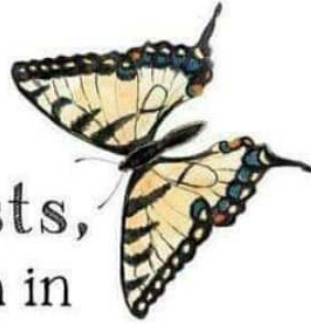
www.cornishfolklore.co.uk



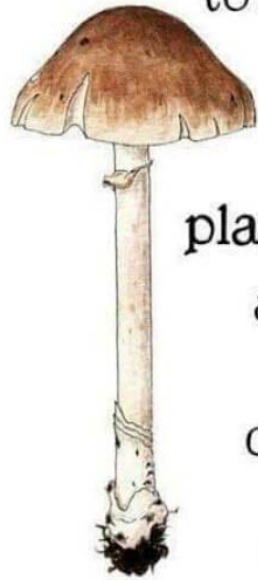
"We are all
meant to be
naturalists,



each in



his own degree,
and it is **inexcusable**
to **live** in a **world**



so **full** of
the *marvels* of
plant & animal *life*
and to *care* for
none
of these things."

~ Charlotte Mason

Thank you