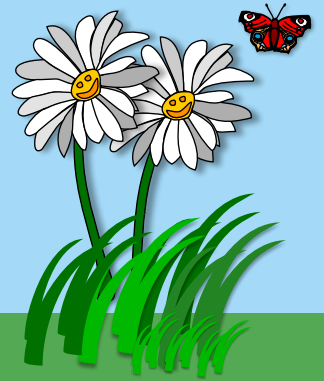


Dobwalls & Trewidland

PARISH NEIGHBOURHOOD PLAN

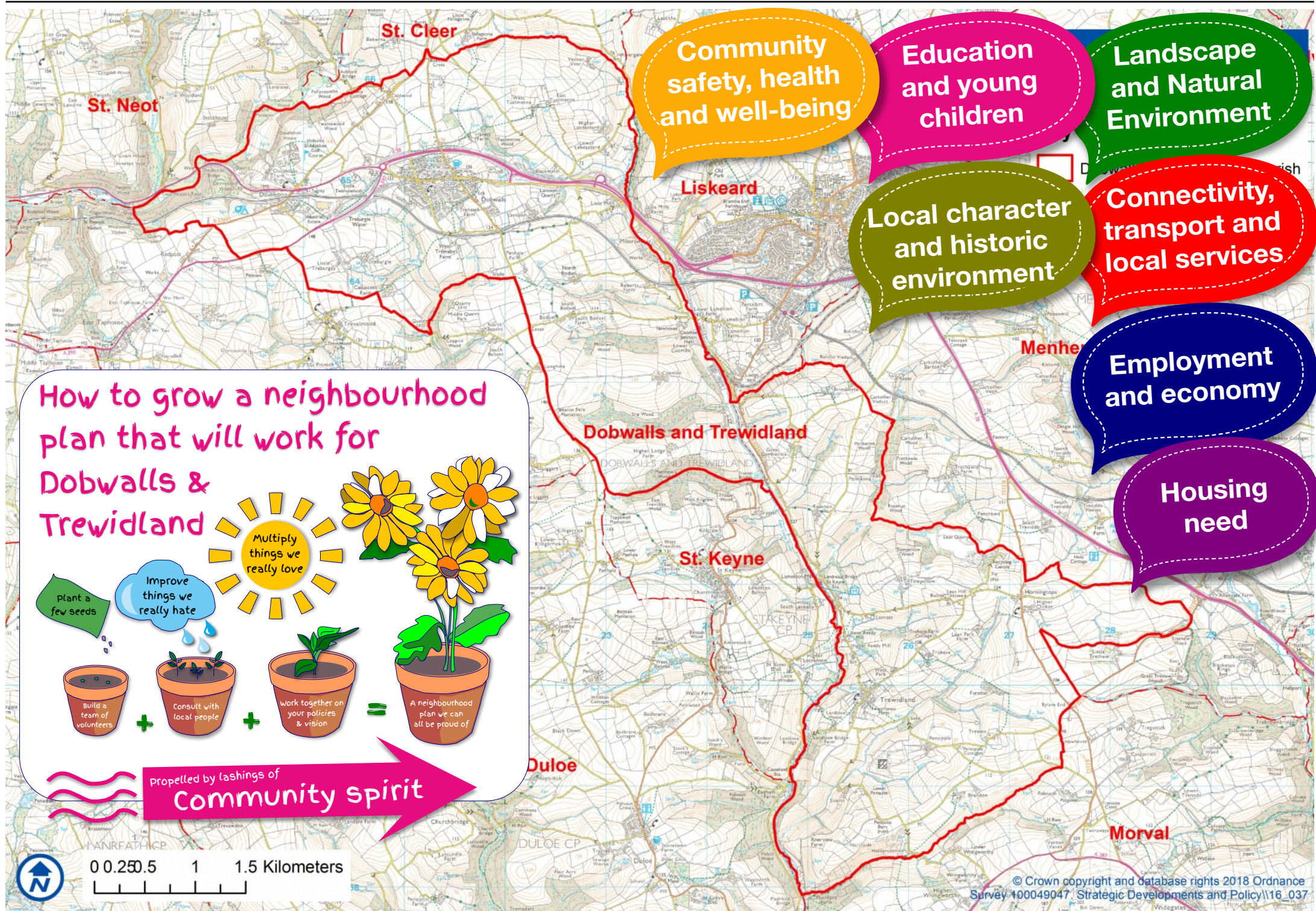


Residents' Survey

Your PLAN, your future

Website: www.dobwallsandtrewidland.org.uk

Facebook: Dobwalls and Trewidland Neighbourhood Plan



HAVE YOUR SAY!

Welcome to this second questionnaire for the Dobwalls and Trewidland Neighbourhood Development Plan.

Thanks to everyone who responded to our initial survey. We have used your answers to inform this new survey which covers a much wider range of topics.

Your involvement will help to make sure

that our varied needs are met while protecting what we cherish most about our Parish and improving the things we are less keen on.

When complete, our Neighbourhood Development Plan will become a statutory planning document with real weight to be used in deciding planning applications alongside the Cornwall Local Plan.

So this really is your chance to influence future development in our Parish.

Please fill out the questionnaire and encourage friends and family in the Parish to do the same.

We would like to hear from everyone who lives or works in the Parish.

Thank you!

Fill in the survey and win a fantastic **cash prize**: See back page for full details

If you need assistance completing this document – please ring **01579-350962**

ONLINE VERSION



AN ONLINE VERSION OF OUR SURVEY CAN BE FOUND AT...

www.surveymonkey.com/r/dt-ndpsurvey

IMPORTANT: To enter the prize draw you **MUST** provide a phone number in the box opposite

Phone number (if entering prize draw)

About you

All data you provide will be kept confidential and will only be used for the purposes of the Neighbourhood Plan.

No data will be passed to any third parties.

Your village: (if rural, just your postcode)

Your postcode: (if known)

GENDER: Male ☐ Female ☐ Prefer not to say ☐

AGE RANGE: Under 18 ☐ 18-30 ☐ 31-49 ☐ 50-64 ☐ 65+ ☐

Thank you for filling in our survey. The questions that you give us will be used to determine the direction of the Neighbourhood Plan in future.

Please don't forget if you wish, you can complete the survey online at the above address.

Thank you!

In our initial survey you stated that the rural feel of our Parish was important to you. Specifically, you said that you valued our local landscape, open spaces and the natural environment.

Landscape and Natural Environment

1 How far would you agree with the following statements?

a) It is important to protect the natural beauty and character of the landscape of the Parish

☐ Strongly agree ☐ Agree ☐ Disagree ☐ Strongly disagree

b) It is important to protect and enhance existing wildlife and wildlife habitats including; trees, woodland, wetland, heathland and Cornish hedges.

☐ Strongly agree ☐ Agree ☐ Disagree ☐ Strongly disagree

c) It is important to create new wildlife habitats as part of new developments. Amongst other things this may include; trees and woodland, wet features, Cornish hedges and flower-rich grassland.

☐ Strongly agree ☐ Agree ☐ Disagree ☐ Strongly disagree

In our initial survey, provision of renewable energy scored relatively poorly on your list of priorities. We just wanted to check we understand how strongly you feel on this.

2 If the provision of renewable energy brought tangible benefits to our community, how would you view this?

- ☐ **NOT** interested, completely rule out
☐ Possibly, depending on the proposal
☐ **YES**, we need more renewable energy

3

Looking ahead, which of the following do you think would be most important to you?

Please tick your top **three** only:

- ☐ Preservation of open/green spaces
☐ Improved footpaths and cycle ways
☐ Good waste management (inc dog fouling)
☐ Preservation of existing agricultural land
☐ Creation of wildlife conservation areas
☐ Planting of new woodland
☐ Protection of existing settlement boundaries

It is clear from the results of our initial survey that local community facilities are valued and in some places, could be significantly improved.

Community safety, health and well-being

4

Please rate the importance of the following, where 1 is very important, 2 is important and 3 is not so important to you.

Please rank your top **three ONLY** from the list below in order of preference:

- 1 2 3
☐ ☐ ☐ Protection/provision of community facilities (Café's pubs, local shops, Post Offices etc)
☐ ☐ ☐ Community events & facilities (village fetes/meeting rooms etc)
☐ ☐ ☐ Social clubs and activities for our older residents
☐ ☐ ☐ Local clubs, organisations & volunteer groups
☐ ☐ ☐ Public sports club facilities
☐ ☐ ☐ Provision for teenagers- equipped facilities
☐ ☐ ☐ Provision of allotments, community gardens
☐ ☐ ☐ Accessible health services (GP surgeries, dentists etc.)
☐ ☐ ☐ Accessible Police services/ neighbourhood watch
☐ ☐ ☐ Accessible countryside/footpath maintenance

The Neighbourhood Plan can influence the type and scale of new infrastructure. There is also some potential for improving existing infrastructure and transport links through projects.

Connectivity, transport and local services

5

Do you think that current public transport provision is adequate for your needs?

- ☐ Yes ☐ No ☐ Don't know

6

If NO, what would improve the situation for you?

Please tick **all** that apply:

- ☐ More frequent buses
☐ Hopper buses (large mini bus size)
☐ Joined up timetable to train links etc
☐ Cheaper fares,
☐ better quality vehicles
☐ Greener (electric) vehicles
☐ Other (please specify) _____



7 Do we need more shoppers parking for cars in your local area?

- ☐ Yes ☐ No ☐ Don't know

8 Do we need more parking for cycles in your local area?

- ☐ Yes ☐ No ☐ Don't know

9 How would you describe broadband in your area?

- ☐ None existent
☐ Needs improving
☐ Fine thank you



Young people are the future of our community. In our initial survey improved facilities for young people scored highly in your priorities. The next few questions are designed to assess their future needs.

Education and young children

10 Do you have any children of school age?

- ☐ Yes ☐ No

If **YES**, at what stage of education are they at:

- ☐ Pre-school
☐ Primary
☐ Secondary
☐ College
☐ University
☐ Home schooled

11 Thinking of young people. Which of the following facilities or resources do you consider to be the most important?

Please tick your top **three** only:

- ☐ Safe, age appropriate areas of recreation
☐ Evening events/clubs for teens
☐ Regular, safe transport links
☐ Safe walking routes to school
☐ Capacity for future school expansion
☐ Further education & career prospects facilities
☐ Local clubs and societies
☐ Childcare services
☐ Young carers support
☐ Other _____

We are lucky to live in a parish that has such a rich cultural heritage and is dotted with important historic sites form many different periods.

Local character and historic environment

12 How far would you agree with the following statements?

a) It is important to protect and enhance heritage and historic sites such as, historic buildings, ancient industrial sites and Cornish Hedges.

- ☐ Strongly agree ☐ Agree ☐ Disagree ☐ Strongly disagree

b) Effort should be made to preserve local tradition and customary events

- ☐ Strongly agree ☐ Agree ☐ Disagree ☐ Strongly disagree

c) We should do more to present our local parish and settlement history

- ☐ Strongly agree ☐ Agree ☐ Disagree ☐ Strongly disagree

d) Our cemeteries and war memorials are being appropriately maintained

- ☐ Strongly agree ☐ Agree ☐ Disagree ☐ Strongly disagree

We cannot deal with individual requests for housing but the following questions will give us some idea of housing need and how you feel about future development in the Parish.

Housing need

13 If development proposals are put forward in our parish in coming years, what are the three most important things that should be considered?

Please rank your top **three ONLY** from the list below in order of preference:

- 1 2 3
☐ ☐ ☐ Housing developments designed to meet local needs including affordable homes
☐ ☐ ☐ Development should be sympathetic to existing local architectural character
☐ ☐ ☐ Development should be small in scale (numbers of houses)
☐ ☐ ☐ Development should have adequate parking
☐ ☐ ☐ We need larger scale development at the edge of current communities
☐ ☐ ☐ We need more business units to help create jobs
☐ ☐ ☐ The design should protect the landscape and countryside

14 What improvements would you like new development to bring to your community?

Please tick **all** that apply:

- ☐ Community gardens/allotments
☐ Improved shopping
☐ Improved community facilities/ meeting places
☐ Improved access to GP services
☐ Housing that meets specific local needs
☐ Improved public car parking
☐ Better community sports facilities
☐ Improved roads and infrastructure
☐ Other please specify _____



15

What concerns you about potential impact of new residential development in the Parish?

Housing need

Continued...

- Please tick your top **three** only:
- ☐ Landscape impact
 - ☐ Poor design
 - ☐ Impact on wildlife or the historic environment
 - ☐ Access to health services
 - ☐ Lack of places at your local school
 - ☐ Loss of local character
 - ☐ Insufficient car parking
 - ☐ Traffic congestion
 - ☐ Other please specify _____

16

Do you think building land should be made available to enable elderly, disabled or vulnerable people (with a link to the Parish) to live independently

☐ Yes☐ No☐ Don't know

17

Do you think that we should prioritise affordable new homes for people with a local connection?

☐ Yes☐ No☐ Don't know

18

If such were available, would you be interested in an affordable plot of land on which to self-build?

☐ Yes☐ No☐ Don't know

Settlement boundaries around our villages could be used in the NDP to help contain new development from spreading beyond current

19

Do you think the NDP steering group should consider settlement boundaries further?

☐ Yes☐ No☐ Don't know

We could produce a Design Guide to inform developers about how we would like new development to look and what features we want to see included. We can specify the types of building materials and finishes to be used for example stone cladding and render to fit in with existing

20

Do you think we should prepare a Design Guide?

☐ Yes☐ No☐ Don't know

Enter our survey and win a cash prize of £50!

£50

Please use the **FREEPOST** envelope provided in this mailing to return our survey to us free of charge (no need for a stamp).

The survey will close on **XXXXX XXXX**.

Further paper copies can be obtained by contacting our Parish Clerk on 01579-350962.

Alternatively, complete the survey online at:

www.surveymonkey.com/r/dt-ndpsurvey

It is important to provide employment and encourage business development. To help us understand local need please answer the following questions

Employment and economy

21

How would you describe your employment status?

☐ Employed☐ Self-employed☐ Retired☐ Semi-retired☐ Student☐ Not working (but none of the above)

22

Do you think run a business in the Dobwalls and Trewidland Parish?

☐ Yes☐ NoIf **NO**, please go straight to question 26

23

If you do run a business in the Parish, where do you run it from?

☐ Home☐ Dedicated premises in the Parish☐ Other_____

24

If you run your Business within the Parish, which of the following would improve your experience of running your business in its current location?

Please tick your top **three** only:

☐ Improved mobile reception☐ Faster Broadband☐ Better business units/ office facilities☐ Innovation centre/ hub or similar☐ Improved public transport☐ Dedicated parking☐ Access to trained workforce☐ Apprenticeships☐ Other_____

25

If you run your Business within the Parish, which of the following would improve your experience of running your business in its current location?

Please tick your top **three** only:

☐ Shared Office space☐ Private Office Space☐ Workshops/light industrial units☐ Starter Units☐ Live and work units☐ Retail Units☐ Industrial sites☐ Micro farm/market gardening land and units☐ Other_____

AND FINALLY

26

Do you agree that we should create a Neighbourhood Development Plan for the Dobwalls and Trewidland Parish?

☐ Yes☐ No☐ Don't know